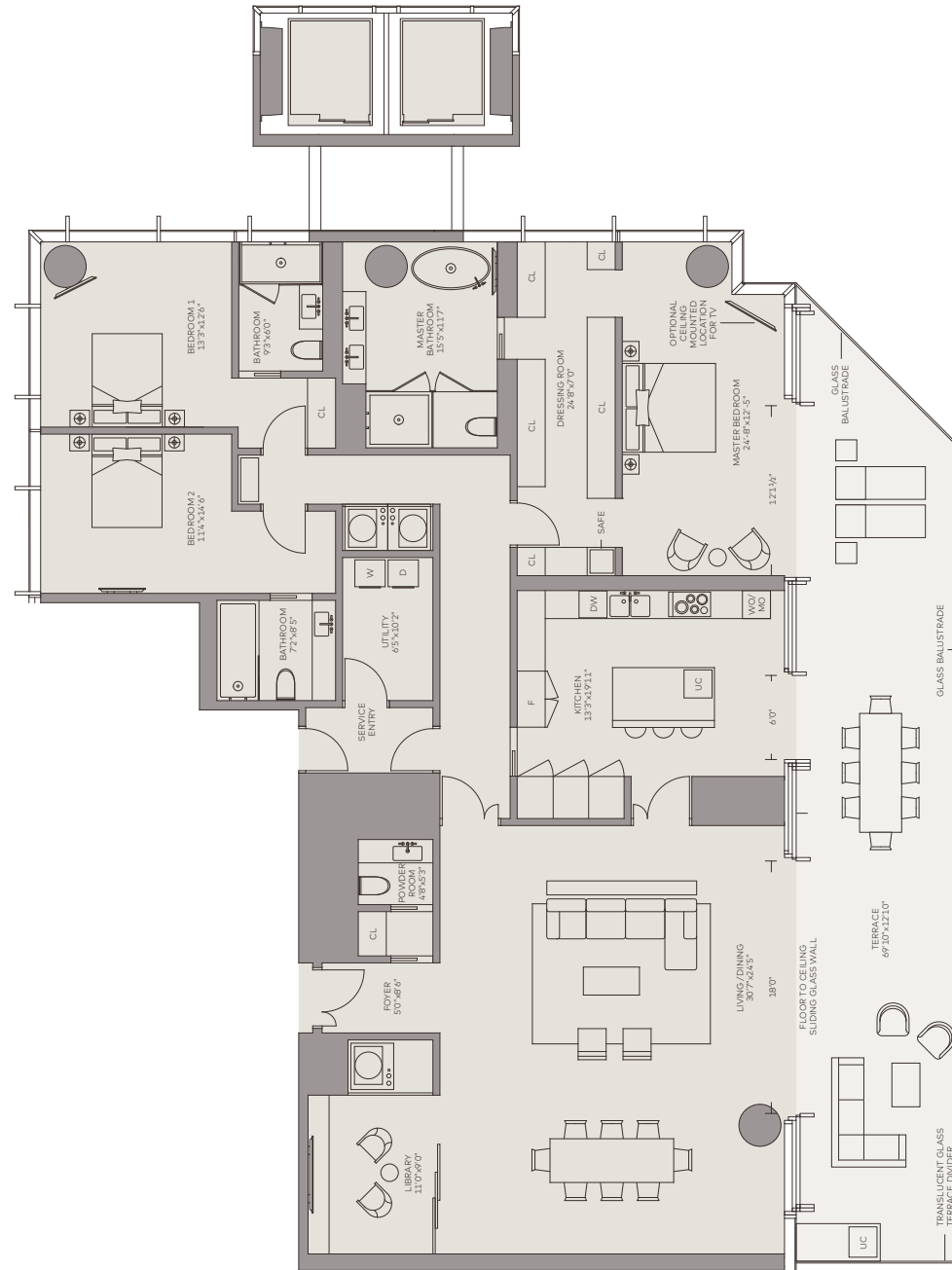


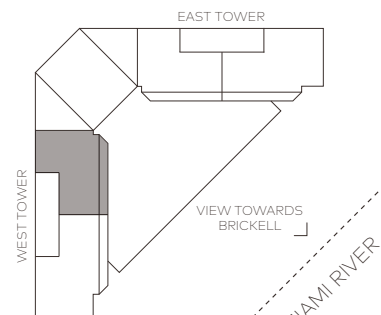
# RESIDENCE



VIEW TOWARDS  
BRICKELL

## UNIT B3 3 bedroom 3.5 bathroom

Interior: 3,027ft<sup>2</sup> / 281m<sup>2</sup>  
Terrace: 767ft<sup>2</sup> / 71m<sup>2</sup>  
Total: 3,794ft<sup>2</sup> / 352m<sup>2</sup>



- Private elevator landings
- 10-to-12-foot-plus ceilings
- Expansive bay, river and city skyline views
- 12-foot deep glass enclosed outdoor living terraces
- Open layouts with floor-to-ceiling glass walls
- Honed stone flooring throughout
- Full slab stone finished Spa bathrooms with Dornbracht and TOTO fixtures
- Walk-in rain showers and free-floating bathtubs

- Dressing rooms with European finishes
- European kitchen cabinetry with stone countertops
- Top-of-the-line Miele and Gaggenau appliances
- Vertically vented exhausts
- Pre-wired for smart technology, designer illumination and A/V
- Custom heavy gauge doors and hardware
- Designated Art Wall with task lighting
- Multi-zone climate control integrated with smart-home technology

This is not intended to be an offer to sell, or solicitation to buy, condominium units to residents of any jurisdiction where such offer or solicitation cannot be made or are otherwise prohibited by law, and your eligibility for purchase will depend upon your state of residency. This offering is made only by the prospectus for the condominium and no statement should be relied upon if not made in the prospectus. The information provided, including pricing, is solely for informational purposes, and is subject to change without notice. Oral representations cannot be relied upon as correctly stating the representations of the developer. For correct representations, make reference to this brochure and to the documents required by section 718.503, Florida statutes, to be furnished by a developer to a buyer or lessee.

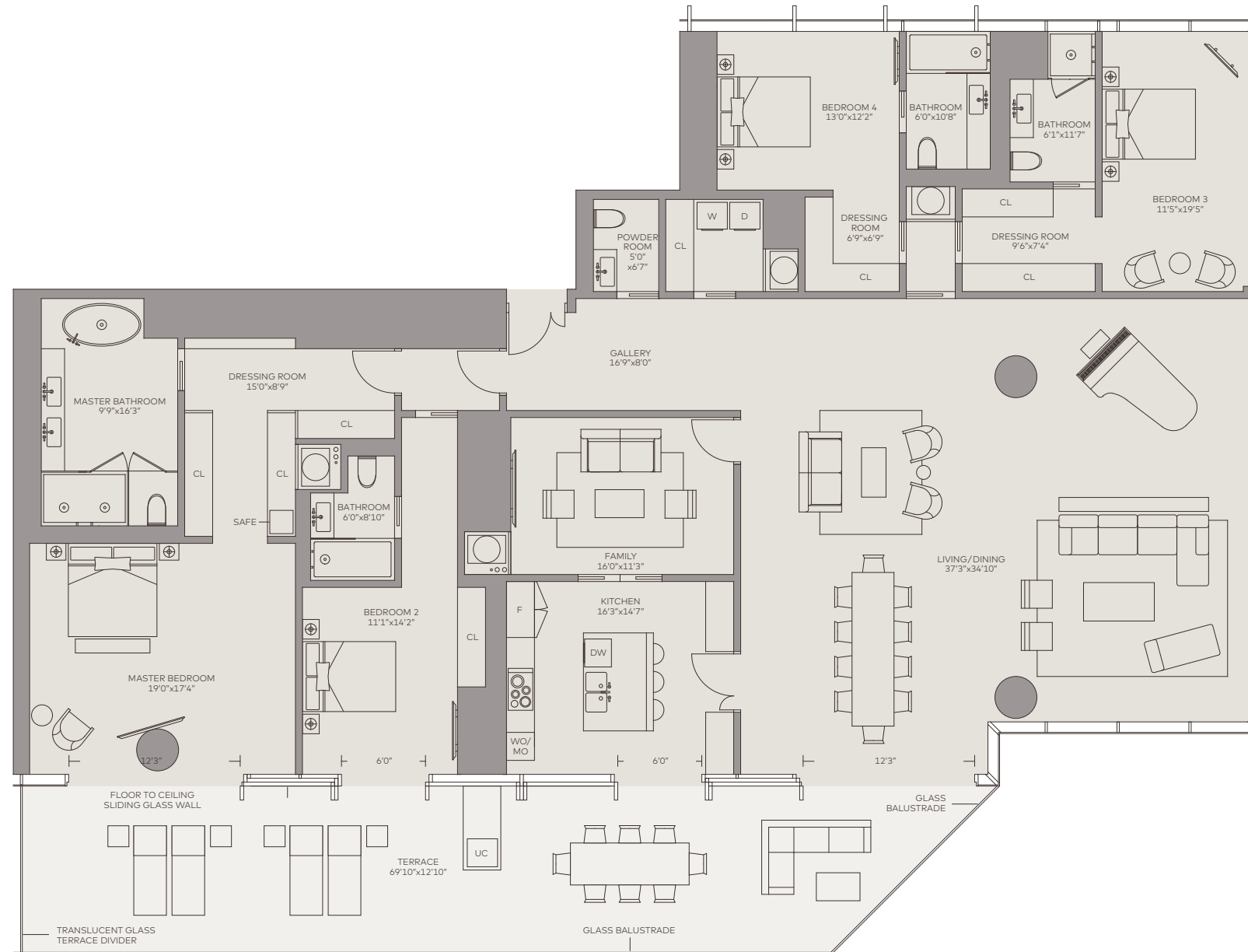


**ONE RIVER POINT**

BY RAFAEL VIÑOLY



# RESIDENCE

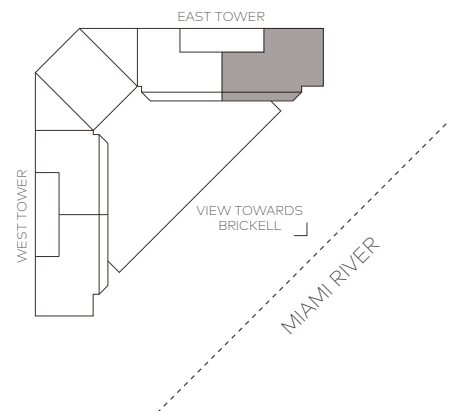


VIEW TOWARDS  
BISCAYNE BAY ➤

VIEW TOWARDS  
BRICKELL ↙

**UNIT B2**  
4 bedroom  
4.5 bathroom

Interior: 3,776ft<sup>2</sup> / 351m<sup>2</sup>  
Terrace: 767ft<sup>2</sup> / 71m<sup>2</sup>  
Total: 4,543ft<sup>2</sup> / 422m<sup>2</sup>



- Private elevator landings
- 10-to-12-foot-plus ceilings
- Expansive bay, river and city skyline views
- 12-foot deep glass enclosed outdoor living terraces
- Open layouts with floor-to-ceiling glass walls
- Honed stone flooring throughout
- Full slab stone finished Spa bathrooms with Dornbracht and TOTO fixtures
- Walk-in rain showers and free-floating bathtubs

- Dressing rooms with European finishes
- European kitchen cabinetry with stone countertops
- Top-of-the-line Miele and Gaggenau appliances
- Vertically vented exhausts
- Pre-wired for smart technology, designer illumination and A/V
- Custom heavy gauge doors and hardware
- Designated Art Wall with task lighting
- Multi-zone climate control integrated with smart-home technology

This is not intended to be an offer to sell, or solicitation to buy, condominium units to residents of any jurisdiction where such offer or solicitation cannot be made or are otherwise prohibited by law, and your eligibility for purchase will depend upon your state of residency. This offering is made only by the prospectus for the condominium and no statement should be relied upon if not made in the prospectus. The information provided, including pricing, is solely for informational purposes, and is subject to change without notice. Oral representations cannot be relied upon as correctly stating the representations of the developer. For correct representations, make reference to this brochure and to the documents required by section 718.503, Florida statutes, to be furnished by a developer to a buyer or lessee.

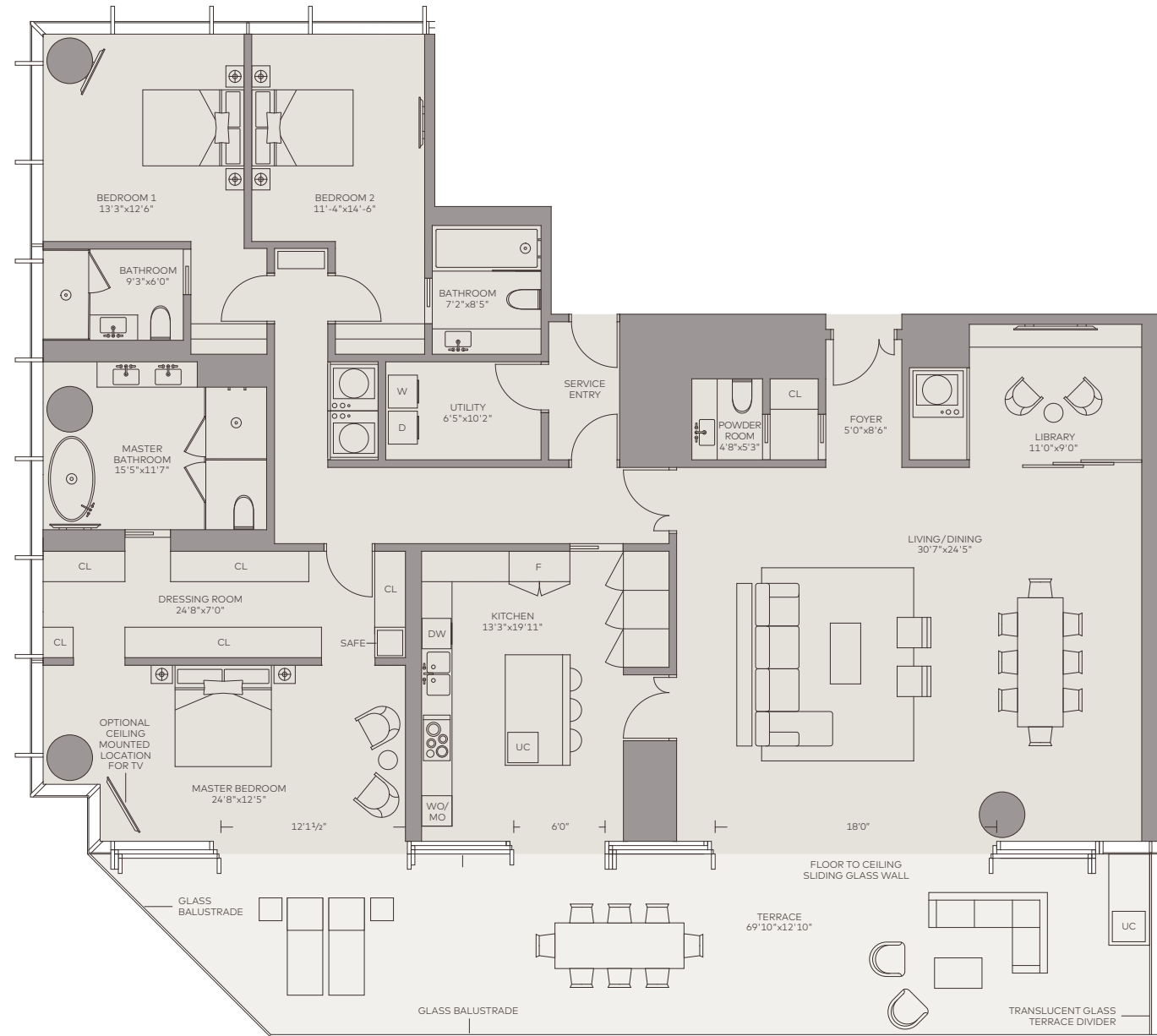


**ONE RIVER POINT**

BY RAFAEL VIÑOLY



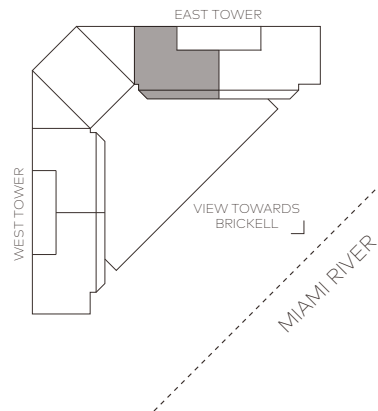
# RESIDENCE



VIEW TOWARDS  
BRICKELL

## UNIT B1 3 bedroom 3.5 bathroom

Interior: 3,027ft<sup>2</sup> / 281m<sup>2</sup>  
Terrace: 767ft<sup>2</sup> / 71m<sup>2</sup>  
Total: 3,794ft<sup>2</sup> / 352m<sup>2</sup>



- Private elevator landings
- 10-to-12-foot-plus ceilings
- Expansive bay, river and city skyline views
- 12-foot deep glass enclosed outdoor living terraces
- Open layouts with floor-to-ceiling glass walls
- Honed stone flooring throughout
- Full slab stone finished Spa bathrooms with Dornbracht and TOTO fixtures
- Walk-in rain showers and free-floating bathtubs

- Dressing rooms with European finishes
- European kitchen cabinetry with stone countertops
- Top-of-the-line Miele and Gaggenau appliances
- Vertically vented exhausts
- Pre-wired for smart technology, designer illumination and A/V
- Custom heavy gauge doors and hardware
- Designated Art Wall with task lighting
- Multi-zone climate control integrated with smart-home technology

This is not intended to be an offer to sell, or solicitation to buy, condominium units to residents of any jurisdiction where such offer or solicitation cannot be made or are otherwise prohibited by law, and your eligibility for purchase will depend upon your state of residency. This offering is made only by the prospectus for the condominium and no statement should be relied upon if not made in the prospectus. The information provided, including pricing, is solely for informational purposes, and is subject to change without notice. Oral representations cannot be relied upon as correctly stating the representations of the developer. For correct representations, make reference to this brochure and to the documents required by section 718.503, Florida statutes, to be furnished by a developer to a buyer or lessee.

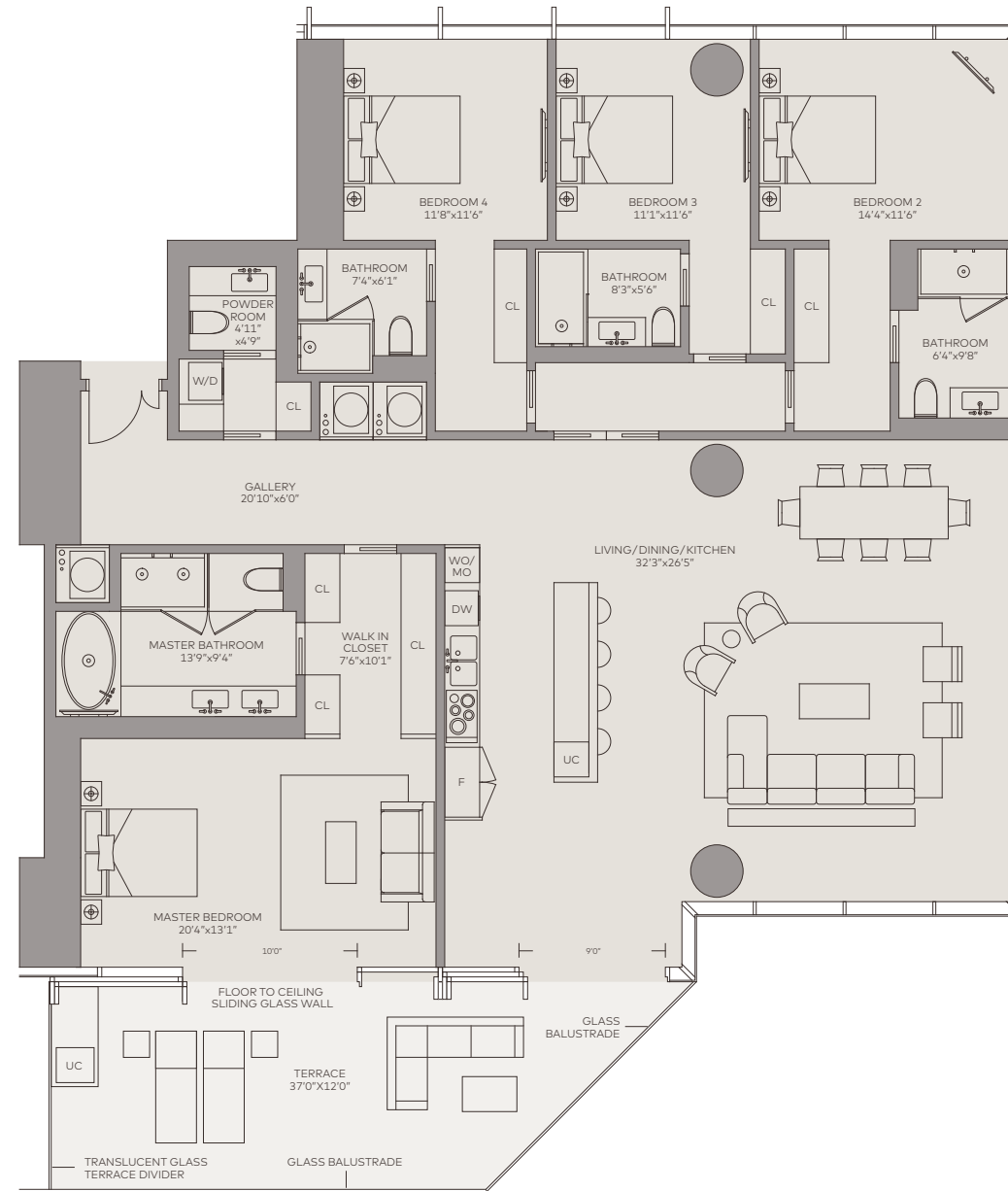


**ONE RIVER POINT**

BY RAFAEL VIÑOLY



# RESIDENCE

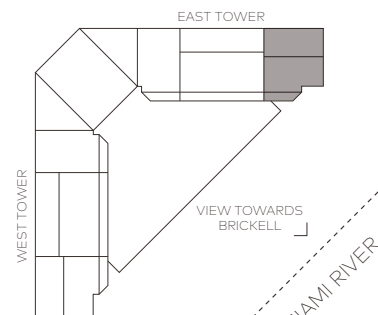


VIEW TOWARDS  
BISCAYNE BAY ➤

VIEW TOWARDS  
BRICKELL ↙

## UNIT C1 4 bedroom 4.5 bathroom

Interior: 2,709ft<sup>2</sup> / 252m<sup>2</sup>  
Terrace: 372ft<sup>2</sup> / 35m<sup>2</sup>  
Total: 3,081ft<sup>2</sup> / 287m<sup>2</sup>



- Private elevator landings
- 10-to-12-foot-plus ceilings
- Expansive bay, river and city skyline views
- 12-foot deep glass enclosed outdoor living terraces
- Open layouts with floor-to-ceiling glass walls
- Honed stone flooring throughout
- Full slab stone finished Spa bathrooms with Dornbracht and TOTO fixtures
- Walk-in rain showers and free-floating bathtubs

- Dressing rooms with European finishes
- European kitchen cabinetry with stone countertops
- Top-of-the-line Miele and Gaggenau appliances
- Vertically vented exhausts
- Pre-wired for smart technology, designer illumination and A/V
- Custom heavy gauge doors and hardware
- Designated Art Wall with task lighting
- Multi-zone climate control integrated with smart-home technology

This is not intended to be an offer to sell, or solicitation to buy, condominium units to residents of any jurisdiction where such offer or solicitation cannot be made or are otherwise prohibited by law, and your eligibility for purchase will depend upon your state of residency. This offering is made only by the prospectus for the condominium and no statement should be relied upon if not made in the prospectus. The information provided, including pricing, is solely for informational purposes, and is subject to change without notice. Oral representations cannot be relied upon as correctly stating the representations of the developer. For correct representations, make reference to this brochure and to the documents required by section 718.503, Florida statutes, to be furnished by a developer to a buyer or lessee.

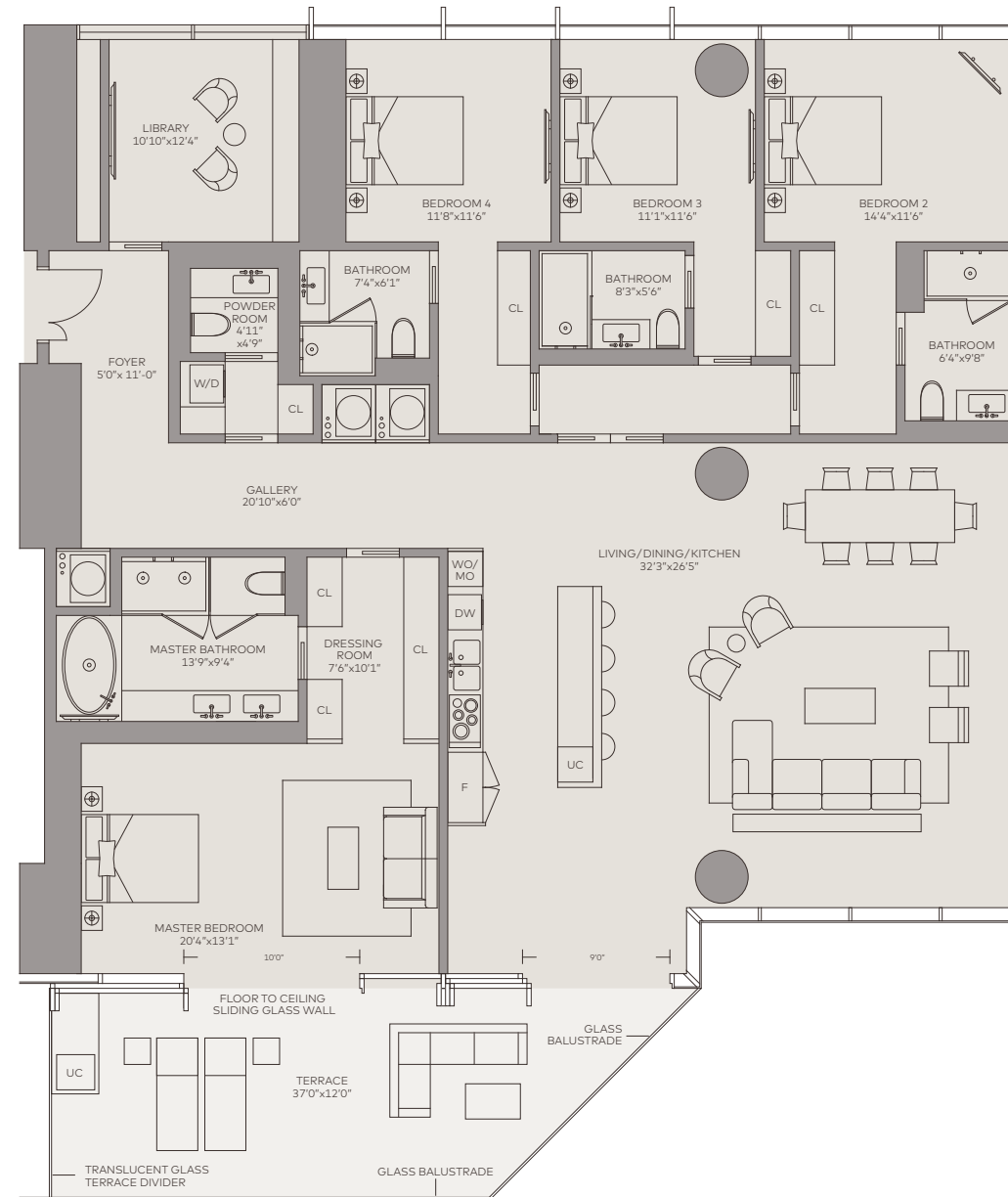


**ONE RIVER POINT**

BY RAFAEL VIÑOLY



# RESIDENCE

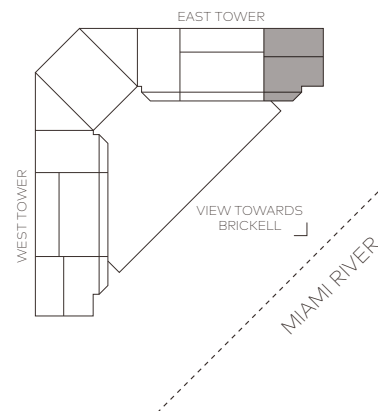


VIEW TOWARDS  
BISCAYNE BAY >

VIEW TOWARDS  
BRICKELL >

## UNIT C1A 4 bedroom 4.5 bathroom

Interior: 2,947ft<sup>2</sup> / 274m<sup>2</sup>  
Terrace: 372ft<sup>2</sup> / 35m<sup>2</sup>  
Total: 3,319ft<sup>2</sup> / 309m<sup>2</sup>



- Private elevator landings
- 10-to-12-foot-plus ceilings
- Expansive bay, river and city skyline views
- 12-foot deep glass enclosed outdoor living terraces
- Open layouts with floor-to-ceiling glass walls
- Honed stone flooring throughout
- Full slab stone finished Spa bathrooms with Dornbracht and TOTO fixtures
- Walk-in rain showers and free-floating bathtubs

- Dressing rooms with European finishes
- European kitchen cabinetry with stone countertops
- Top-of-the-line Miele and Gaggenau appliances
- Vertically vented exhausts
- Pre-wired for smart technology, designer illumination and A/V
- Custom heavy gauge doors and hardware
- Designated Art Wall with task lighting
- Multi-zone climate control integrated with smart-home technology

This is not intended to be an offer to sell, or solicitation to buy, condominium units to residents of any jurisdiction where such offer or solicitation cannot be made or are otherwise prohibited by law, and your eligibility for purchase will depend upon your state of residency. This offering is made only by the prospectus for the condominium and no statement should be relied upon if not made in the prospectus. The information provided, including pricing, is solely for informational purposes, and is subject to change without notice. Oral representations cannot be relied upon as correctly stating the representations of the developer. For correct representations, make reference to this brochure and to the documents required by section 718.503, Florida statutes, to be furnished by a developer to a buyer or lessee.

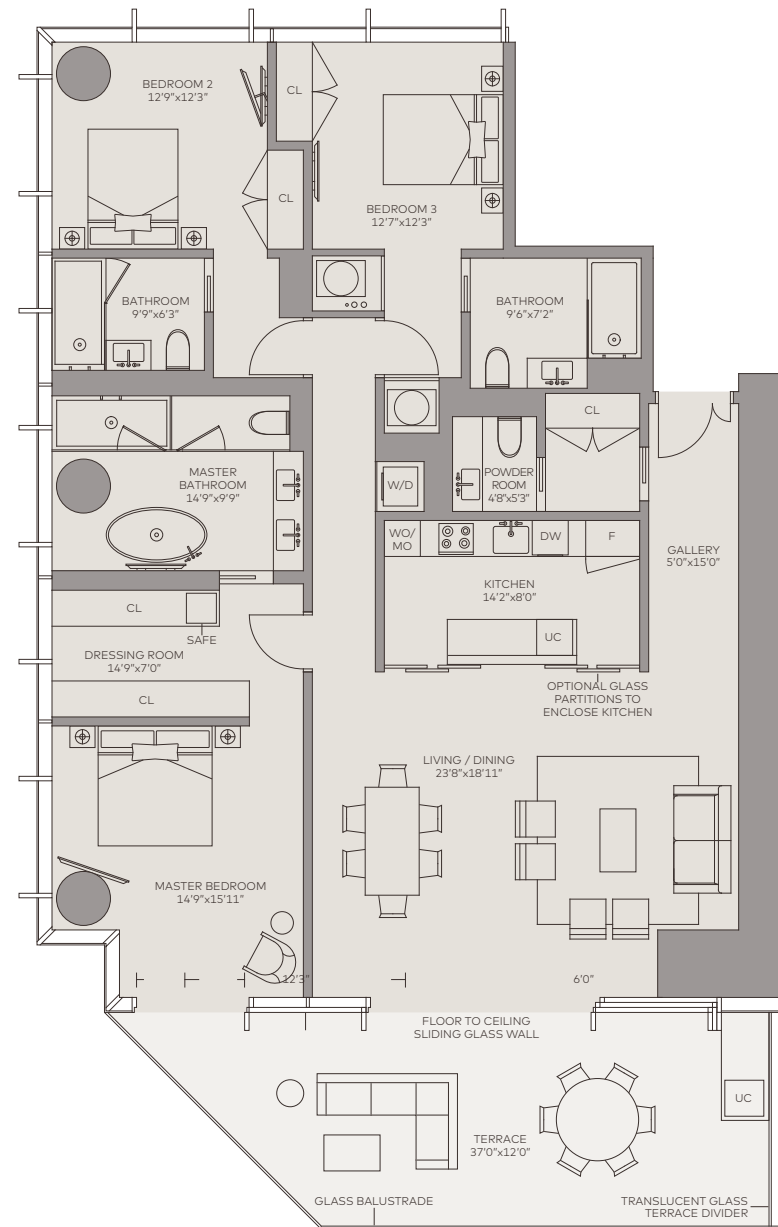


**ONE RIVER POINT**

BY RAFAEL VIÑOLY



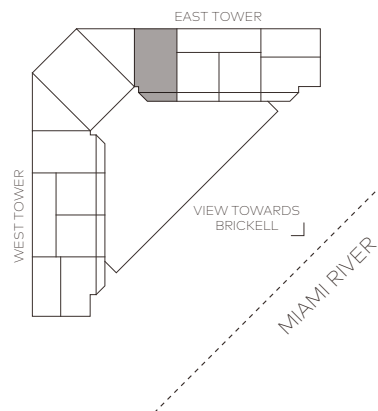
# RESIDENCE



VIEW TOWARDS  
BRICKELL

## UNIT D1 3 bedroom 3.5 bathroom

Interior: 1,917ft<sup>2</sup> / 178m<sup>2</sup>  
Terrace: 372ft<sup>2</sup> / 35m<sup>2</sup>  
Total: 2,289ft<sup>2</sup> / 213m<sup>2</sup>



- Private elevator landings
- 10-to-12-foot-plus ceilings
- Expansive bay, river and city skyline views
- 12-foot deep glass enclosed outdoor living terraces
- Open layouts with floor-to-ceiling glass walls
- Honed stone flooring throughout
- Full slab stone finished Spa bathrooms with Dornbracht and TOTO fixtures
- Walk-in rain showers and free-floating bathtubs
- Dressing rooms with European finishes
- European kitchen cabinetry with stone countertops
- Top-of-the-line Miele and Gaggenau appliances
- Vertically vented exhausts
- Pre-wired for smart technology, designer illumination and A/V
- Custom heavy gauge doors and hardware
- Designated Art Wall with task lighting
- Multi-zone climate control integrated with smart-home technology

This is not intended to be an offer to sell, or solicitation to buy, condominium units to residents of any jurisdiction where such offer or solicitation cannot be made or are otherwise prohibited by law, and your eligibility for purchase will depend upon your state of residency. This offering is made only by the prospectus for the condominium and no statement should be relied upon if not made in the prospectus. The information provided, including pricing, is solely for informational purposes, and is subject to change without notice. Oral representations cannot be relied upon as correctly stating the representations of the developer. For correct representations, make reference to this brochure and to the documents required by section 718.503, Florida statutes, to be furnished by a developer to a buyer or lessee.

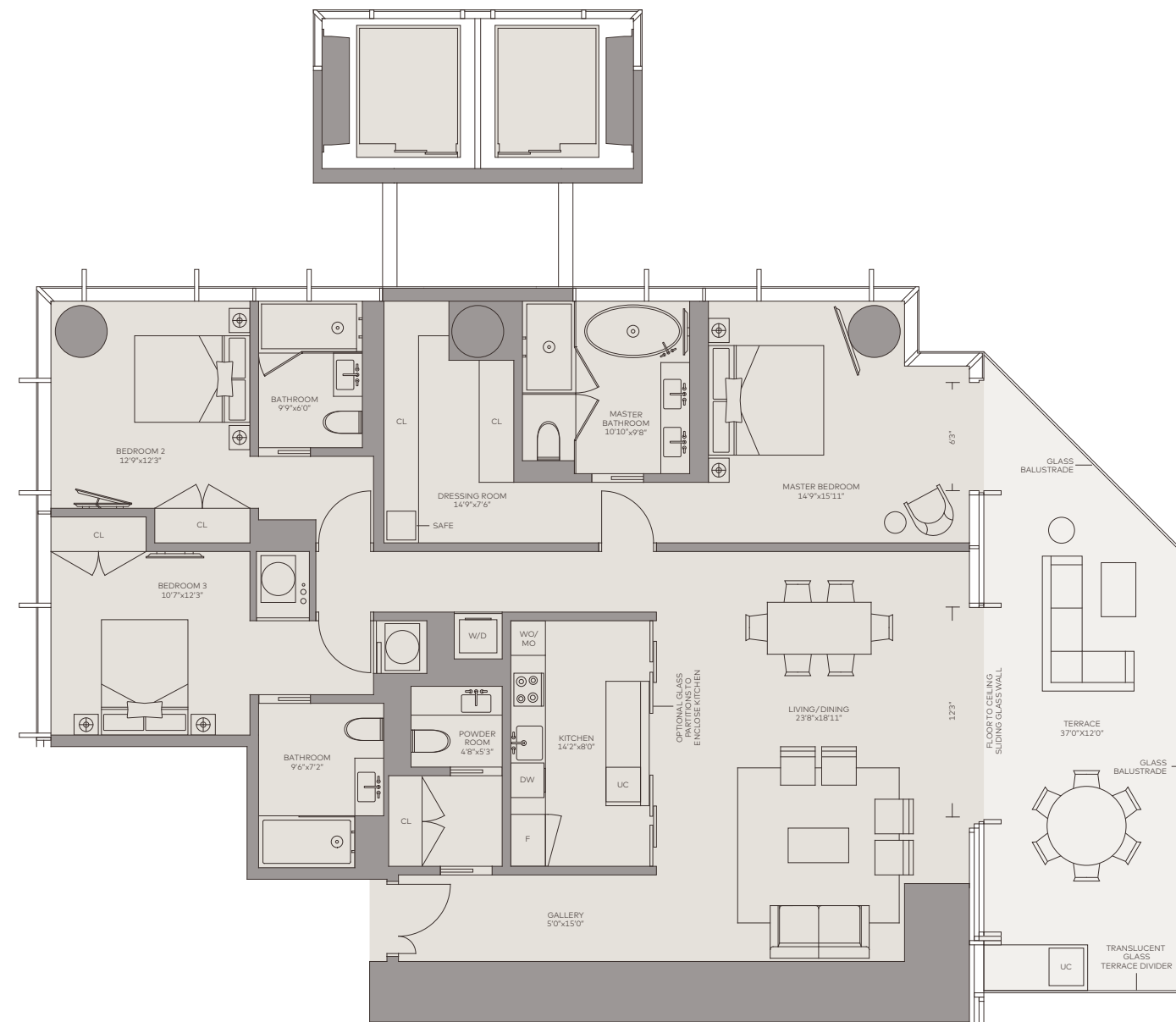


**ONE RIVER POINT**

BY RAFAEL VIÑOLY



# RESIDENCE

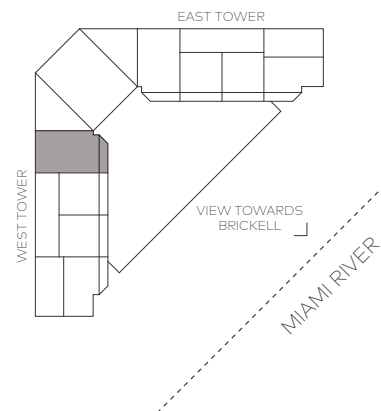


VIEW TOWARDS  
BISCAYNE BAY >

VIEW TOWARDS  
BRICKELL >

## UNIT D2 3 bedroom 3.5 bathroom

Interior: 1,917ft<sup>2</sup> / 178m<sup>2</sup>  
Terrace: 372ft<sup>2</sup> / 35m<sup>2</sup>  
Total: 2,289ft<sup>2</sup> / 213m<sup>2</sup>



- Private elevator landings
- 10-to-12-foot-plus ceilings
- Expansive bay, river and city skyline views
- 12-foot deep glass enclosed outdoor living terraces
- Open layouts with floor-to-ceiling glass walls
- Honed stone flooring throughout
- Full slab stone finished Spa bathrooms with Dornbracht and TOTO fixtures
- Walk-in rain showers and free-floating bathtubs

- Dressing rooms with European finishes
- European kitchen cabinetry with stone countertops
- Top-of-the-line Miele and Gaggenau appliances
- Vertically vented exhausts
- Pre-wired for smart technology, designer illumination and A/V
- Custom heavy gauge doors and hardware
- Designated Art Wall with task lighting
- Multi-zone climate control integrated with smart-home technology

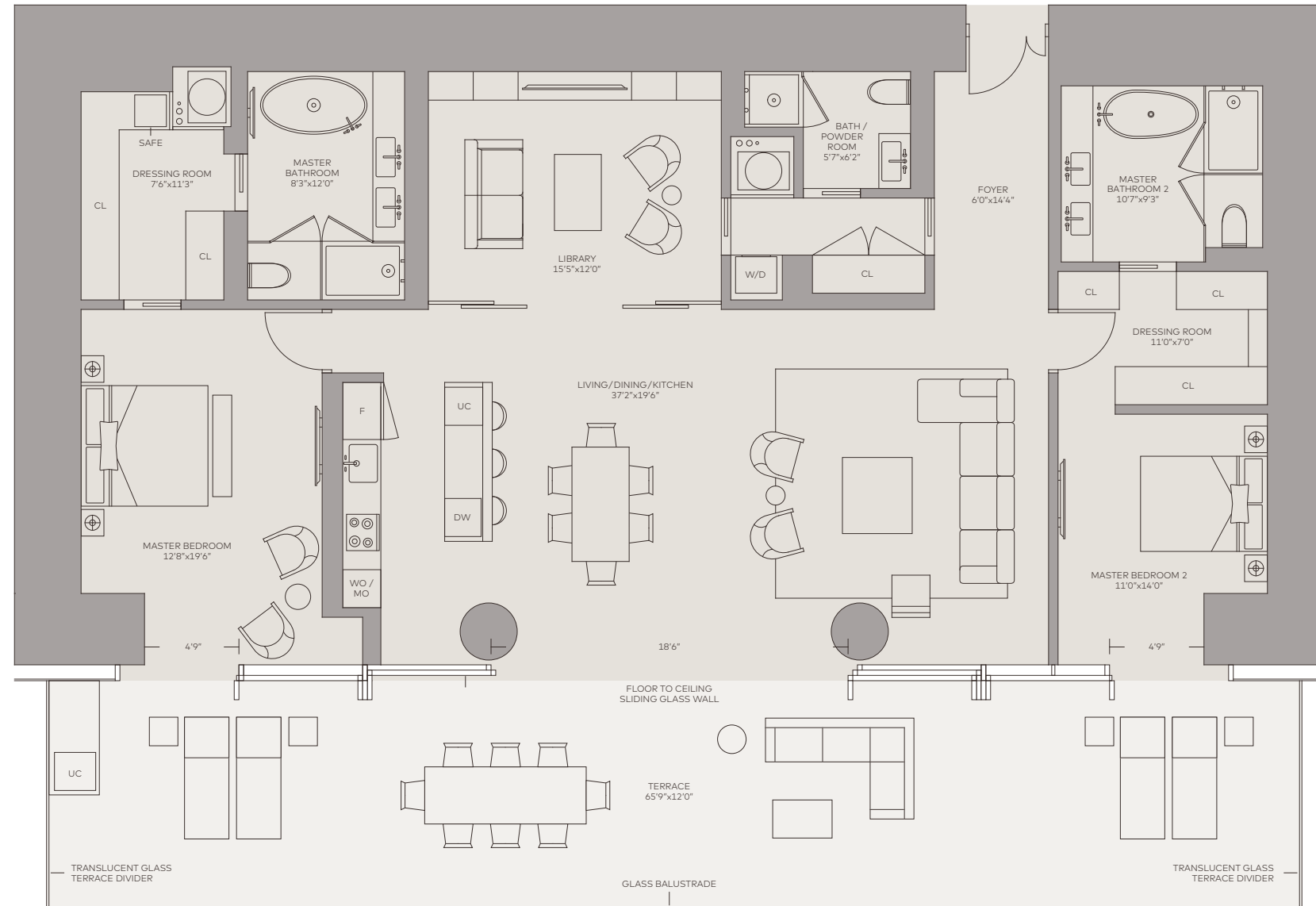
This is not intended to be an offer to sell, or solicitation to buy, condominium units to residents of any jurisdiction where such offer or solicitation cannot be made or are otherwise prohibited by law, and your eligibility for purchase will depend upon your state of residency. This offering is made only by the prospectus for the condominium and no statement should be relied upon if not made in the prospectus. The information provided, including pricing, is solely for informational purposes, and is subject to change without notice. Oral representations cannot be relied upon as correctly stating the representations of the developer. For correct representations, make reference to this brochure and to the documents required by section 718.503, Florida statutes, to be furnished by a developer to a buyer or lessee.



**ONE RIVER POINT**

BY RAFAEL VIÑOLY

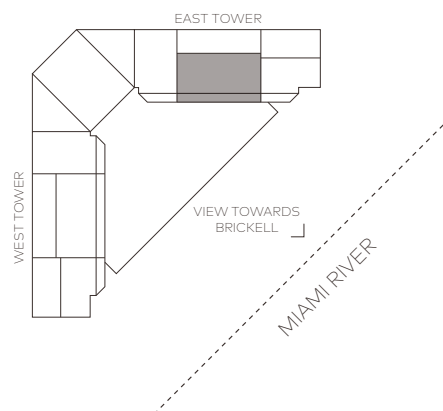
# RESIDENCE



VIEW TOWARDS  
BRICKELL

## UNIT E1 2 bedrooms 3 bathrooms

Interior: 2,012ft<sup>2</sup> / 187m<sup>2</sup>  
Terrace: 790ft<sup>2</sup> / 73m<sup>2</sup>  
Total: 2,802ft<sup>2</sup> / 260m<sup>2</sup>



- Private elevator landings
- 10-to-12-foot-plus ceilings
- Expansive bay, river and city skyline views
- 12-foot deep glass enclosed outdoor living terraces
- Open layouts with floor-to-ceiling glass walls
- Honed stone flooring throughout
- Full slab stone finished Spa bathrooms with Dornbracht and TOTO fixtures
- Walk-in rain showers and free-floating bathtubs

- Dressing rooms with European finishes
- European kitchen cabinetry with stone countertops
- Top-of-the-line Miele and Gaggenau appliances
- Vertically vented exhausts
- Pre-wired for smart technology, designer illumination and A/V
- Custom heavy gauge doors and hardware
- Designated Art Wall with task lighting
- Multi-zone climate control integrated with smart-home technology

This is not intended to be an offer to sell, or solicitation to buy, condominium units to residents of any jurisdiction where such offer or solicitation cannot be made or are otherwise prohibited by law, and your eligibility for purchase will depend upon your state of residency. This offering is made only by the prospectus for the condominium and no statement should be relied upon if not made in the prospectus. The information provided, including pricing, is solely for informational purposes, and is subject to change without notice. Oral representations cannot be relied upon as correctly stating the representations of the developer. For correct representations, make reference to this brochure and to the documents required by section 718.503, Florida statutes, to be furnished by a developer to a buyer or lessee.

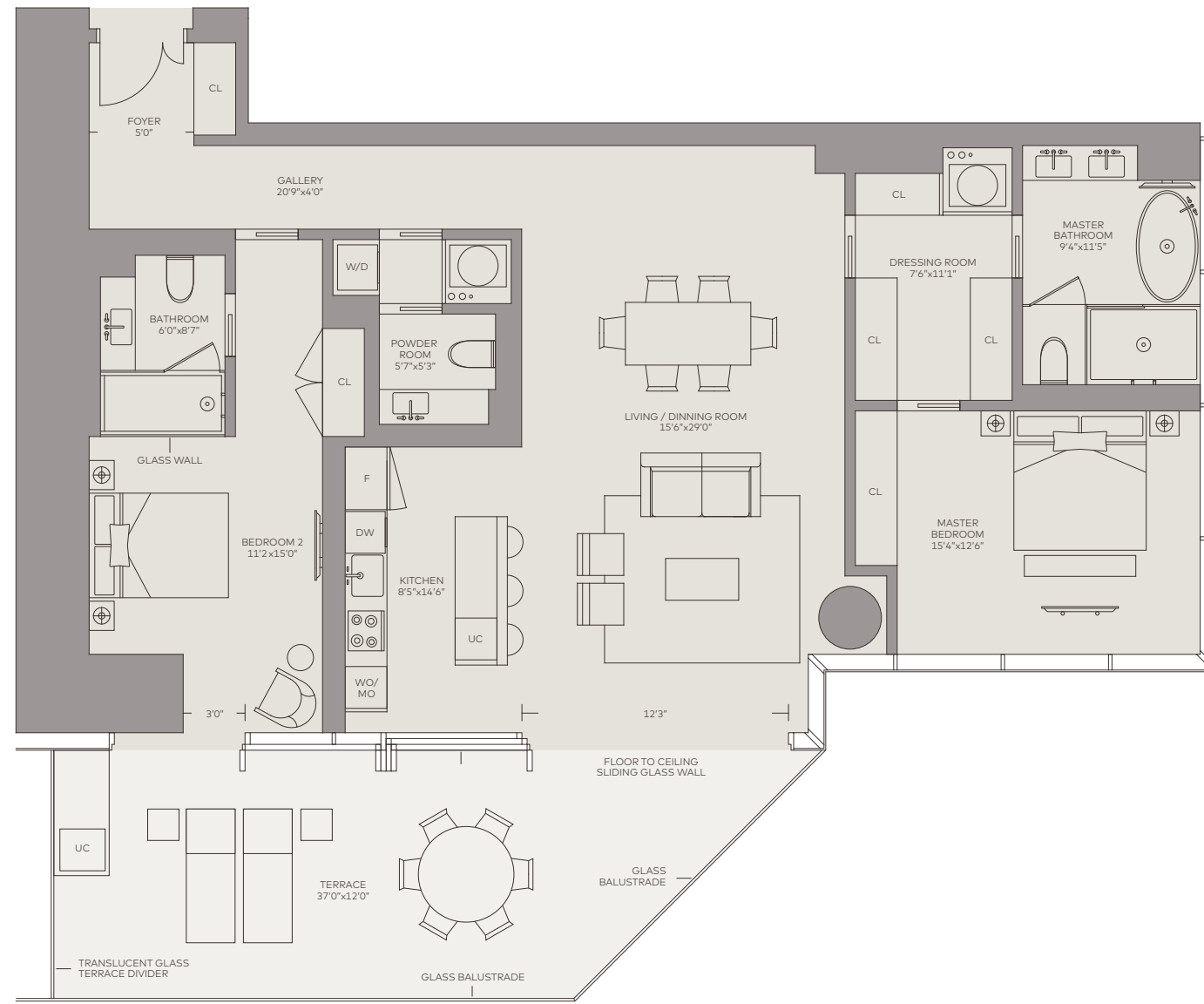


**ONE RIVER POINT**  
BY RAFAEL VIÑOLY





# RESIDENCE

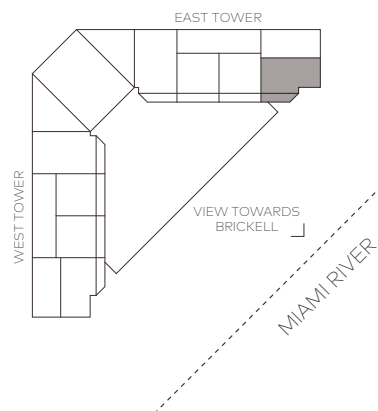


VIEW TOWARDS  
BISCAYNE BAY ➤

VIEW TOWARDS  
BRICKELL ↙

## UNIT E2 2 bedrooms 2.5 bathrooms

Interior: 1,543ft<sup>2</sup> / 143m<sup>2</sup>  
Terrace: 372ft<sup>2</sup> / 35m<sup>2</sup>  
Total: 1,915ft<sup>2</sup> / 178m<sup>2</sup>



- Private elevator landings
- 10-to-12-foot-plus ceilings
- Expansive bay, river and city skyline views
- 12-foot deep glass enclosed outdoor living terraces
- Open layouts with floor-to-ceiling glass walls
- Honed stone flooring throughout
- Full slab stone finished Spa bathrooms with Dornbracht and TOTO fixtures
- Walk-in rain showers and free-floating bathtubs

- Dressing rooms with European finishes
- European kitchen cabinetry with stone countertops
- Top-of-the-line Miele and Gaggenau appliances
- Vertically vented exhausts
- Pre-wired for smart technology, designer illumination and A/V
- Custom heavy gauge doors and hardware
- Designated Art Wall with task lighting
- Multi-zone climate control integrated with smart-home technology

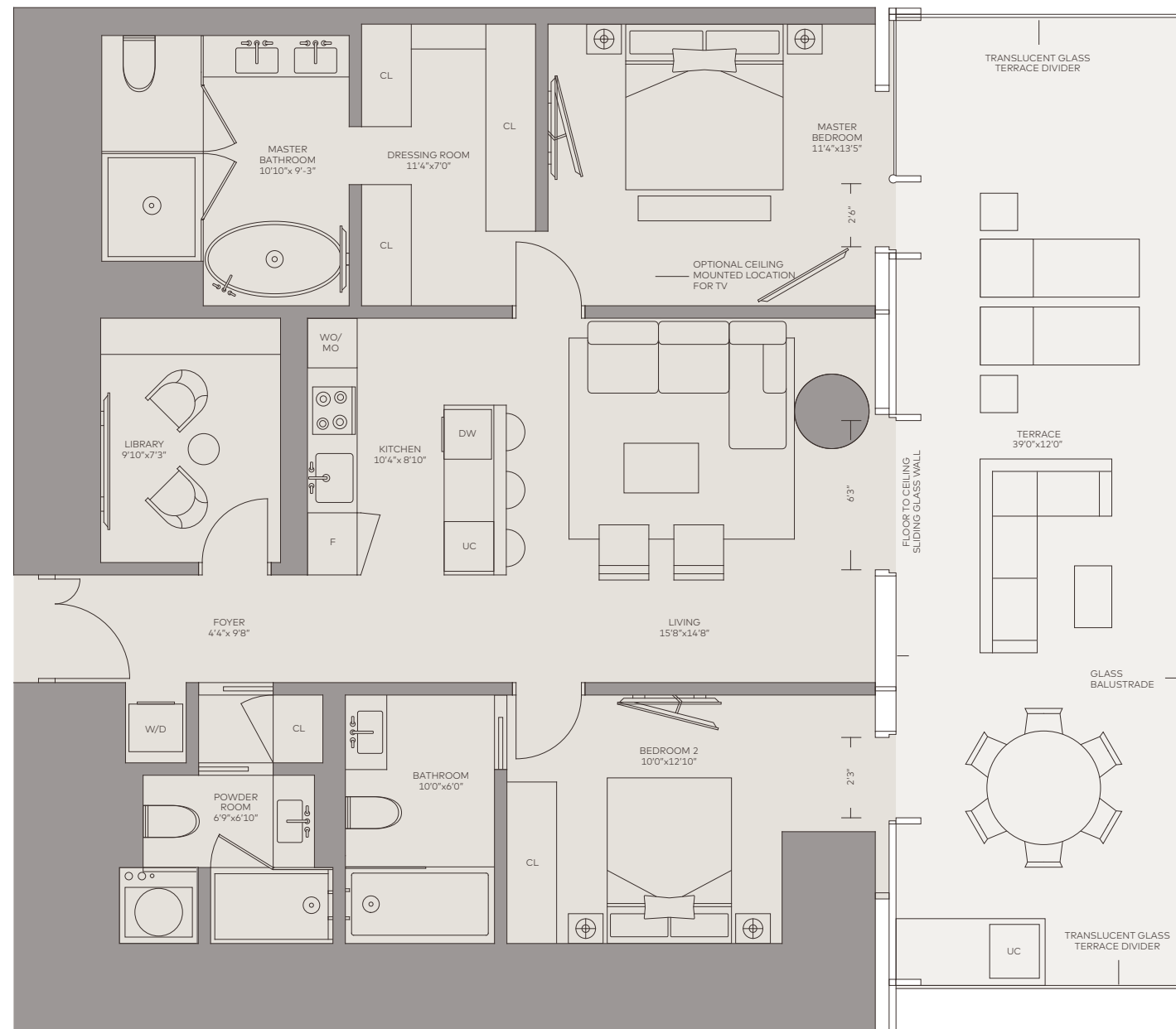
This is not intended to be an offer to sell, or solicitation to buy, condominium units to residents of any jurisdiction where such offer or solicitation cannot be made or are otherwise prohibited by law, and your eligibility for purchase will depend upon your state of residency. This offering is made only by the prospectus for the condominium and no statement should be relied upon if not made in the prospectus. The information provided, including pricing, is solely for informational purposes, and is subject to change without notice. Oral representations cannot be relied upon as correctly stating the representations of the developer. For correct representations, make reference to this brochure and to the documents required by section 718.503, Florida statutes, to be furnished by a developer to a buyer or lessee.



**ONE RIVER POINT**

BY RAFAEL VIÑOLY

# RESIDENCE

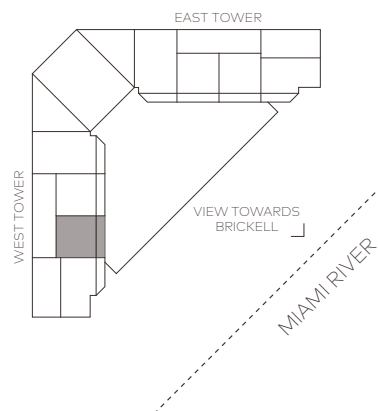


VIEW TOWARDS  
BISCAYNE BAY ➤

VIEW TOWARDS  
BRICKELL ↙

## UNIT E3 2 bedrooms 2.5 bathrooms

Interior: 1,201ft<sup>2</sup> / 112m<sup>2</sup>  
Terrace: 468ft<sup>2</sup> / 43m<sup>2</sup>  
Total: 1,669ft<sup>2</sup> / 155m<sup>2</sup>



- Private elevator landings
- 10-to-12-foot-plus ceilings
- Expansive bay, river and city skyline views
- 12-foot deep glass enclosed outdoor living terraces
- Open layouts with floor-to-ceiling glass walls
- Honed stone flooring throughout
- Full slab stone finished Spa bathrooms with Dornbracht and TOTO fixtures
- Walk-in rain showers and free-floating bathtubs

- Dressing rooms with European finishes
- European kitchen cabinetry with stone countertops
- Top-of-the-line Miele and Gaggenau appliances
- Vertically vented exhausts
- Pre-wired for smart technology, designer illumination and A/V
- Custom heavy gauge doors and hardware
- Designated Art Wall with task lighting
- Multi-zone climate control integrated with smart-home technology

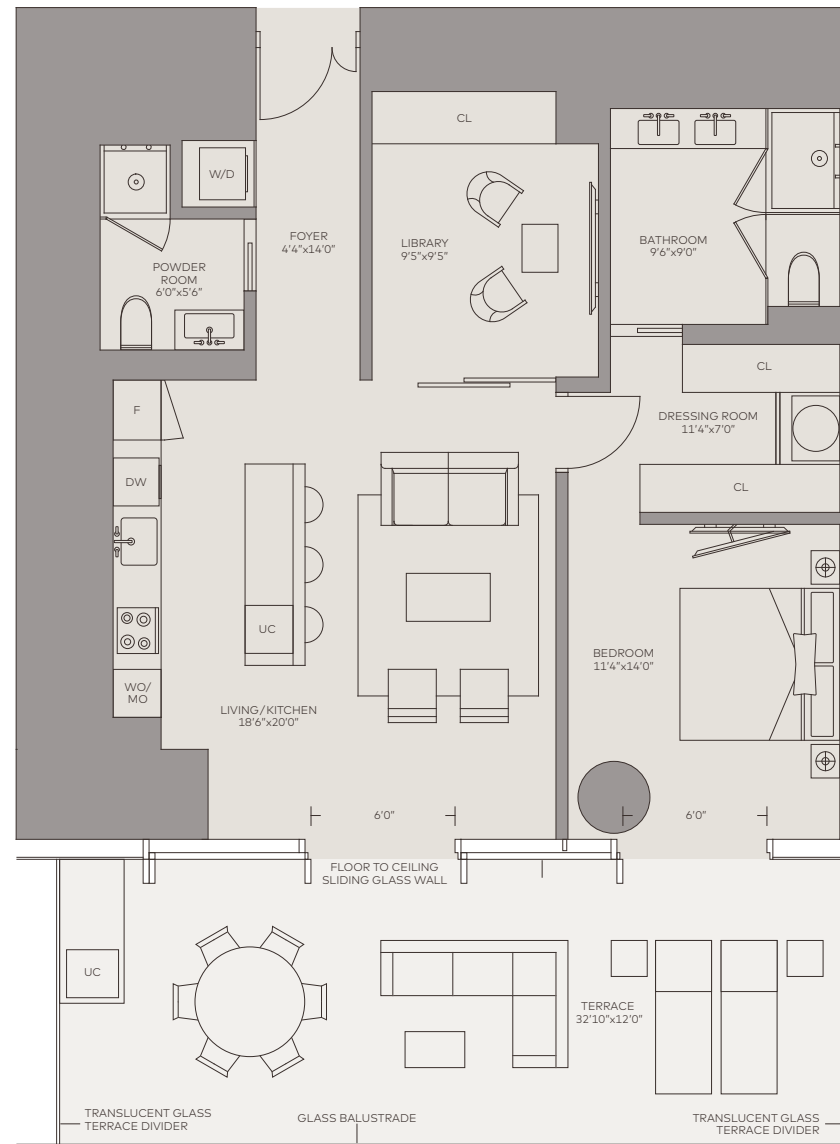
This is not intended to be an offer to sell, or solicitation to buy, condominium units to residents of any jurisdiction where such offer or solicitation cannot be made or are otherwise prohibited by law, and your eligibility for purchase will depend upon your state of residency. This offering is made only by the prospectus for the condominium and no statement should be relied upon if not made in the prospectus. The information provided, including pricing, is solely for informational purposes, and is subject to change without notice. Oral representations cannot be relied upon as correctly stating the representations of the developer. For correct representations, make reference to this brochure and to the documents required by section 718.503, Florida statutes, to be furnished by a developer to a buyer or lessee.



**ONE RIVER POINT**  
BY RAFAEL VIÑOLY



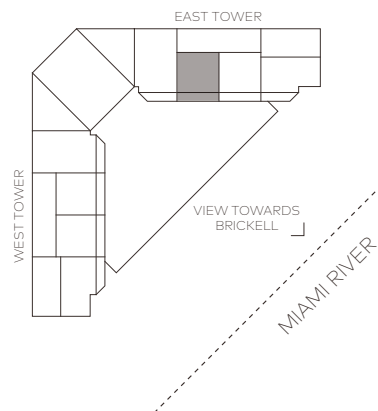
# RESIDENCE



VIEW TOWARDS  
BRICKELL

## UNIT F1 1 bedroom 1.5 bathroom

Interior: 1,008ft<sup>2</sup> / 94m<sup>2</sup>  
Terrace: 395ft<sup>2</sup> / 37m<sup>2</sup>  
Total: 1,403ft<sup>2</sup> / 131m<sup>2</sup>



- Private elevator landings
- 10-to-12-foot-plus ceilings
- Expansive bay, river and city skyline views
- 12-foot deep glass enclosed outdoor living terraces
- Open layouts with floor-to-ceiling glass walls
- Honed stone flooring throughout
- Full slab stone finished Spa bathrooms with Dornbracht and TOTO fixtures
- Walk-in rain showers and free-floating bathtubs

- Dressing rooms with European finishes
- European kitchen cabinetry with stone countertops
- Top-of-the-line Miele and Gaggenau appliances
- Vertically vented exhausts
- Pre-wired for smart technology, designer illumination and A/V
- Custom heavy gauge doors and hardware
- Designated Art Wall with task lighting
- Multi-zone climate control integrated with smart-home technology

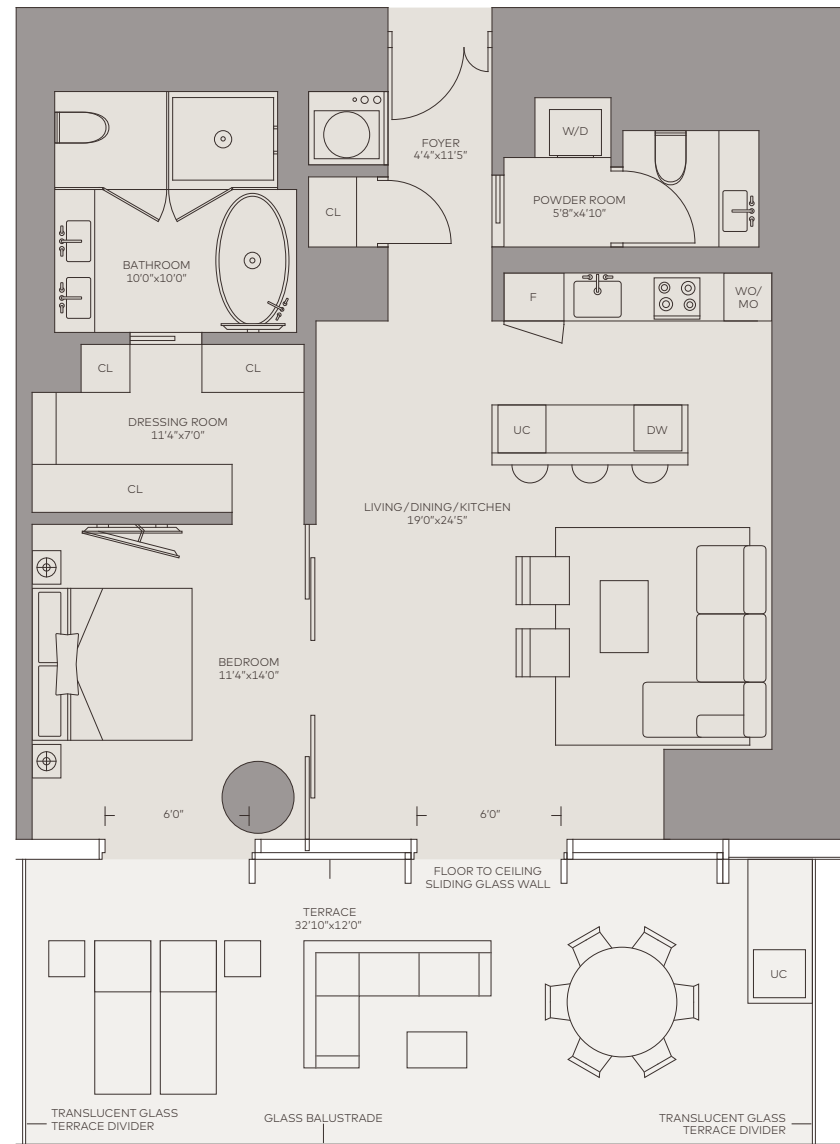
This is not intended to be an offer to sell, or solicitation to buy, condominium units to residents of any jurisdiction where such offer or solicitation cannot be made or are otherwise prohibited by law, and your eligibility for purchase will depend upon your state of residency. This offering is made only by the prospectus for the condominium and no statement should be relied upon if not made in the prospectus. The information provided, including pricing, is solely for informational purposes, and is subject to change without notice. Oral representations cannot be relied upon as correctly stating the representations of the developer. For correct representations, make reference to this brochure and to the documents required by section 718.503, Florida statutes, to be furnished by a developer to a buyer or lessee.



**ONE RIVER POINT**  
BY RAFAEL VIÑOLY



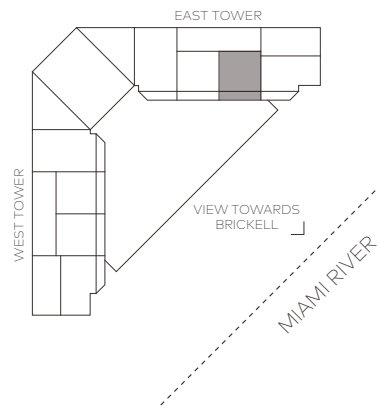
# RESIDENCE



VIEW TOWARDS  
BRICKELL

## UNIT F2 1 bedroom 1.5 bathroom

Interior: 1,008ft<sup>2</sup> / 94m<sup>2</sup>  
Terrace: 395ft<sup>2</sup> / 37m<sup>2</sup>  
Total: 1,403ft<sup>2</sup> / 131m<sup>2</sup>



- Private elevator landings
- 10-to-12-foot-plus ceilings
- Expansive bay, river and city skyline views
- 12-foot deep glass enclosed outdoor living terraces
- Open layouts with floor-to-ceiling glass walls
- Honed stone flooring throughout
- Full slab stone finished Spa bathrooms with Dornbracht and TOTO fixtures
- Walk-in rain showers and free-floating bathtubs
- Dressing rooms with European finishes
- European kitchen cabinetry with stone countertops
- Top-of-the-line Miele and Gaggenau appliances
- Vertically vented exhausts
- Pre-wired for smart technology, designer illumination and A/V
- Custom heavy gauge doors and hardware
- Designated Art Wall with task lighting
- Multi-zone climate control integrated with smart-home technology

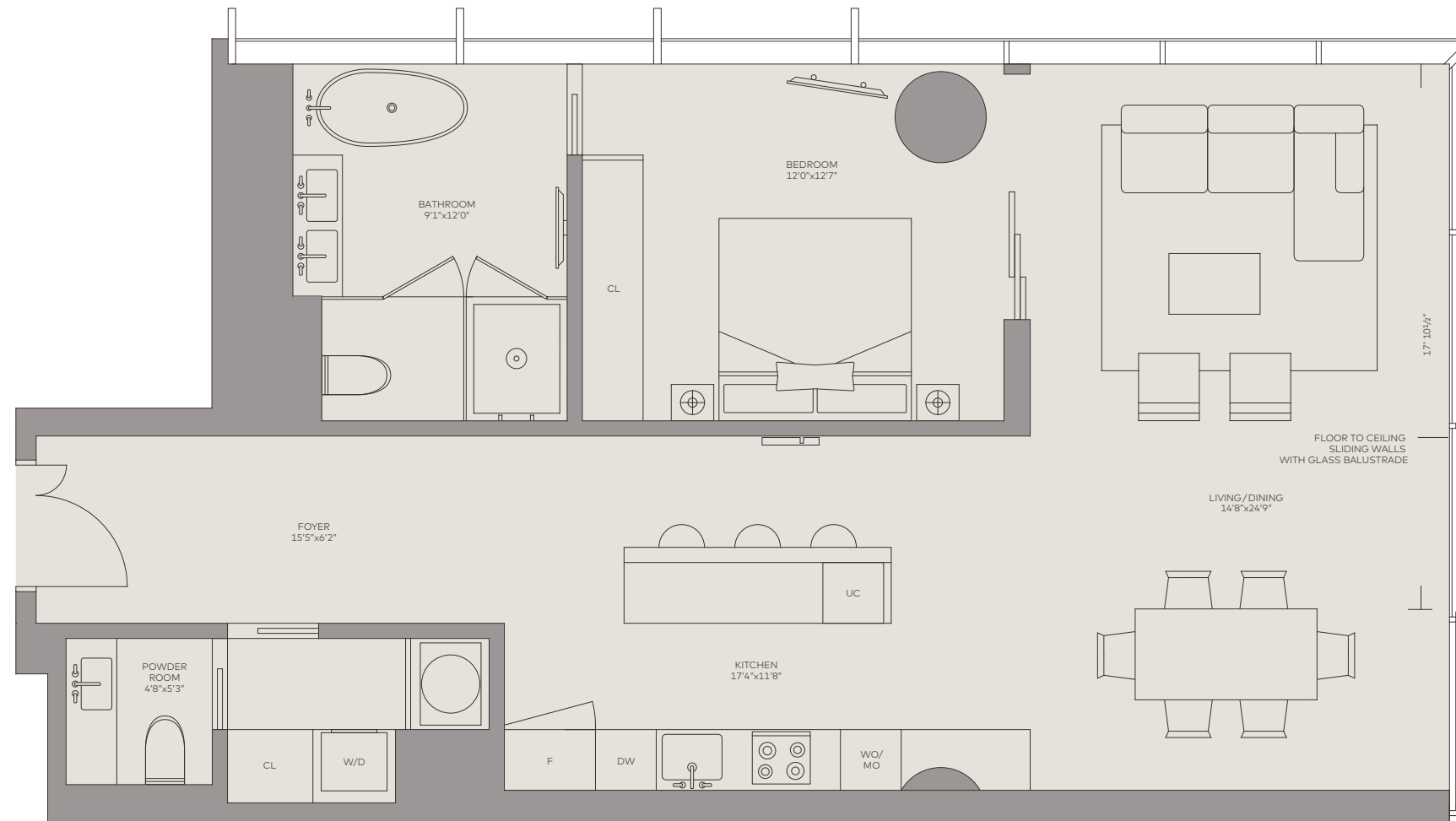
This is not intended to be an offer to sell, or solicitation to buy, condominium units to residents of any jurisdiction where such offer or solicitation cannot be made or are otherwise prohibited by law, and your eligibility for purchase will depend upon your state of residency. This offering is made only by the prospectus for the condominium and no statement should be relied upon if not made in the prospectus. The information provided, including pricing, is solely for informational purposes, and is subject to change without notice. Oral representations cannot be relied upon as correctly stating the representations of the developer. For correct representations, make reference to this brochure and to the documents required by section 718.503, Florida statutes, to be furnished by a developer to a buyer or lessee.



**ONE RIVER POINT**  
BY RAFAEL VIÑOLY



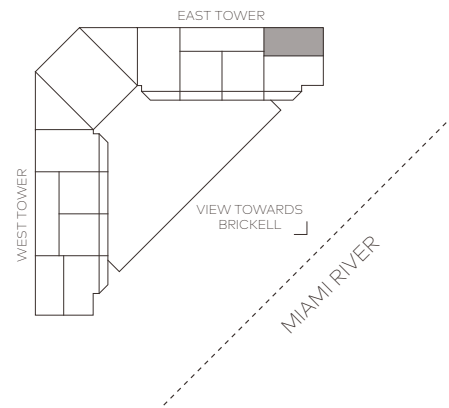
# RESIDENCE



VIEW TOWARDS  
BISCAYNE BAY >

VIEW TOWARDS  
BRICKELL >

**UNIT F3**  
1 bedroom  
1.5 bathroom  
Total: 1,115ft<sup>2</sup> / 104m<sup>2</sup>



- Private elevator landings
- 10-to-12-foot-plus ceilings
- Expansive bay, river and city skyline views
- 12-foot deep glass enclosed outdoor living terraces
- Open layouts with floor-to-ceiling glass walls
- Honed stone flooring throughout
- Full slab stone finished Spa bathrooms with Dornbracht and TOTO fixtures
- Walk-in rain showers and free-floating bathtubs

- Dressing rooms with European finishes
- European kitchen cabinetry with stone countertops
- Top-of-the-line Miele and Gaggenau appliances
- Vertically vented exhausts
- Pre-wired for smart technology, designer illumination and A/V
- Custom heavy gauge doors and hardware
- Designated Art Wall with task lighting
- Multi-zone climate control integrated with smart-home technology

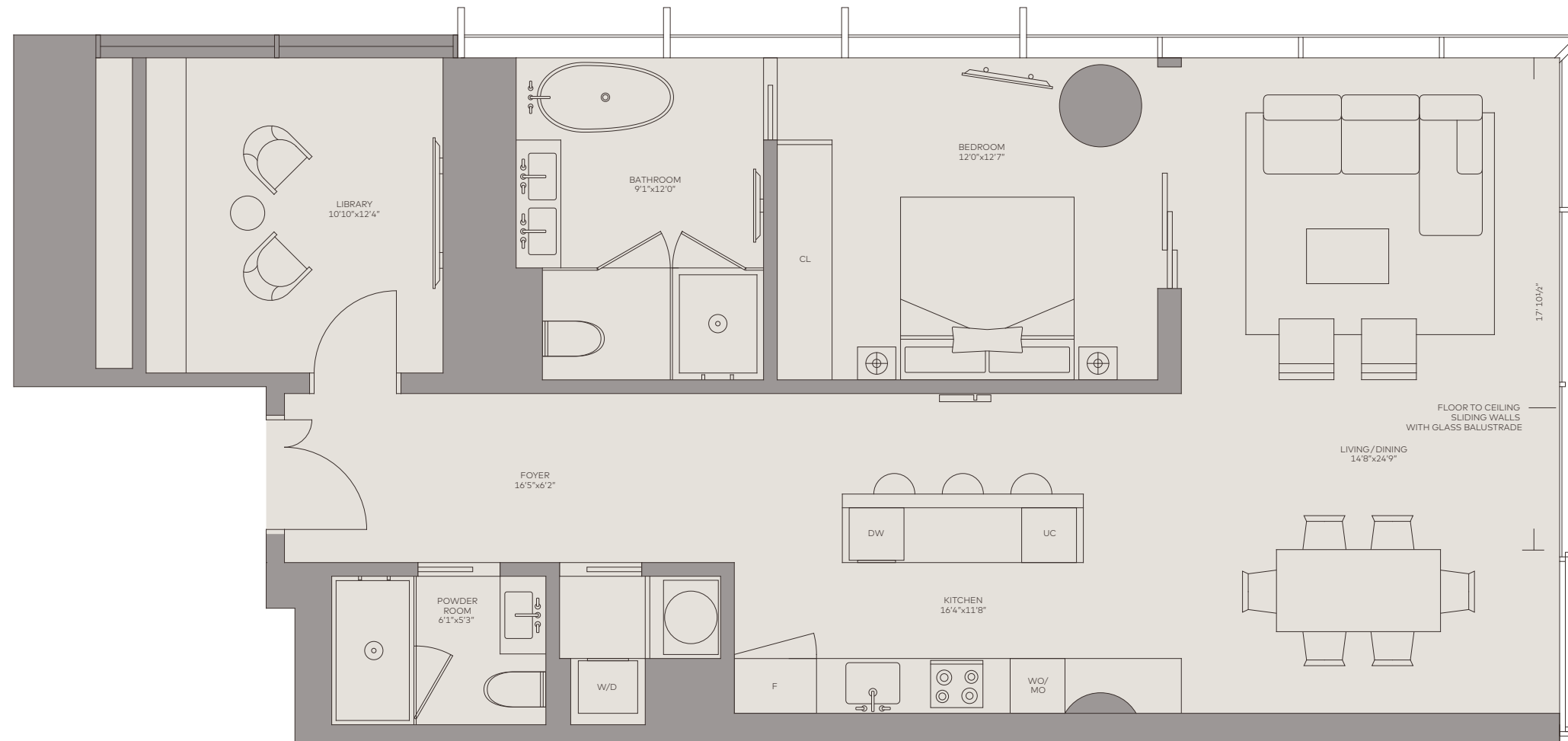
This is not intended to be an offer to sell, or solicitation to buy, condominium units to residents of any jurisdiction where such offer or solicitation cannot be made or are otherwise prohibited by law, and your eligibility for purchase will depend upon your state of residency. This offering is made only by the prospectus for the condominium and no statement should be relied upon if not made in the prospectus. The information provided, including pricing, is solely for informational purposes, and is subject to change without notice. Oral representations cannot be relied upon as correctly stating the representations of the developer. For correct representations, make reference to this brochure and to the documents required by section 718.503, Florida statutes, to be furnished by a developer to a buyer or lessee.



**ONE RIVER POINT**  
BY RAFAEL VIÑOLY



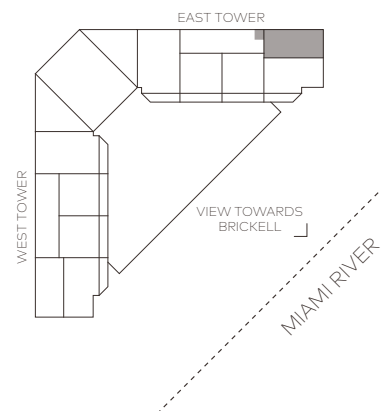
# RESIDENCE



VIEW TOWARDS  
BISCAYNE BAY

VIEW TOWARDS  
BRICKELL

**UNIT F3 A**  
1 bedroom  
1.5 bathroom  
Total: 1,279ft<sup>2</sup> / 119m<sup>2</sup>



- Private elevator landings
- 10-to-12-foot-plus ceilings
- Expansive bay, river and city skyline views
- 12-foot deep glass enclosed outdoor living terraces
- Open layouts with floor-to-ceiling glass walls
- Honed stone flooring throughout
- Full slab stone finished Spa bathrooms with Dornbracht and TOTO fixtures
- Walk-in rain showers and free-floating bathtubs

- Dressing rooms with European finishes
- European kitchen cabinetry with stone countertops
- Top-of-the-line Miele and Gaggenau appliances
- Vertically vented exhausts
- Pre-wired for smart technology, designer illumination and A/V
- Custom heavy gauge doors and hardware
- Designated Art Wall with task lighting
- Multi-zone climate control integrated with smart-home technology

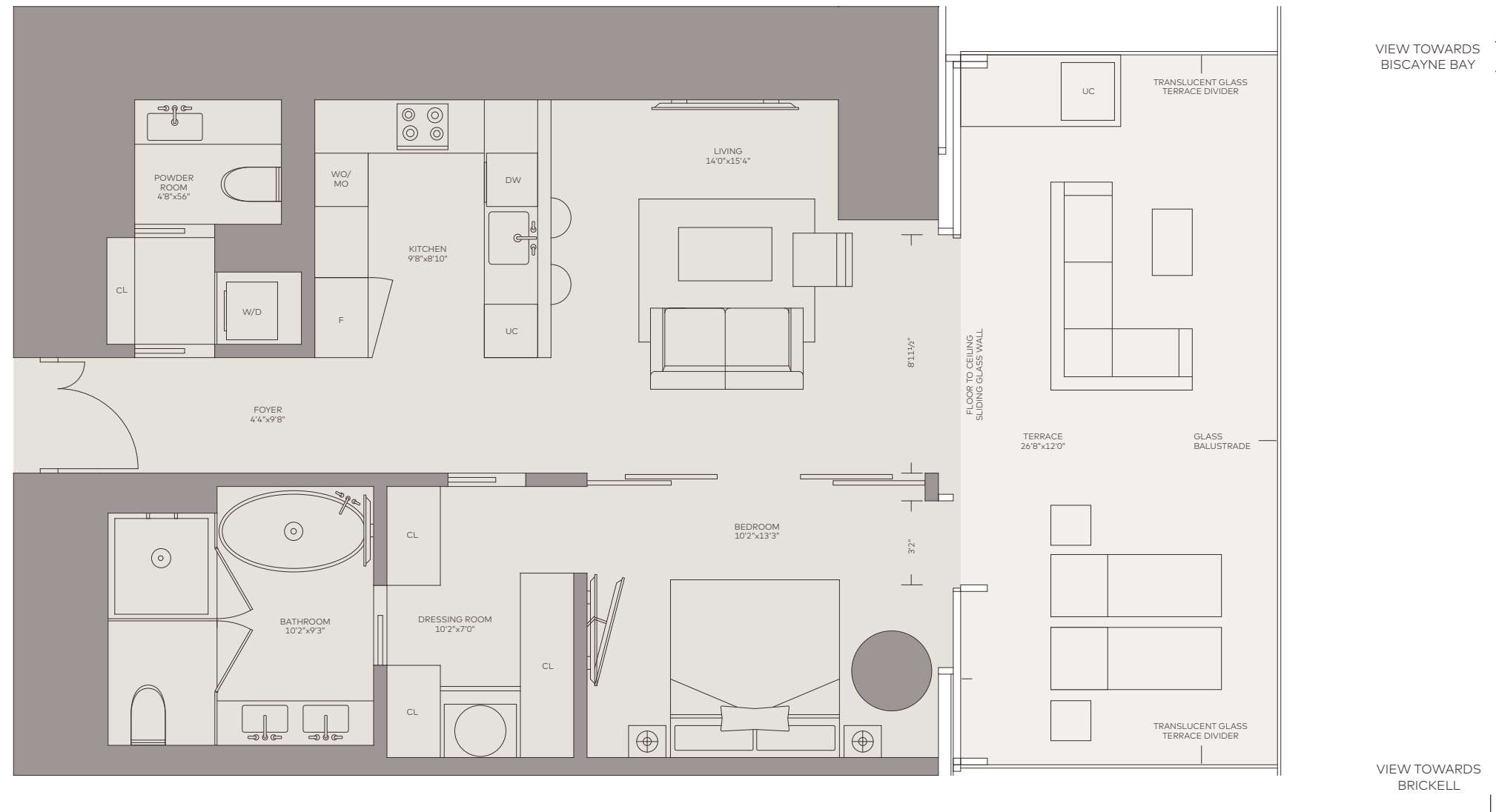
This is not intended to be an offer to sell, or solicitation to buy, condominium units to residents of any jurisdiction where such offer or solicitation cannot be made or are otherwise prohibited by law, and your eligibility for purchase will depend upon your state of residency. This offering is made only by the prospectus for the condominium and no statement should be relied upon if not made in the prospectus. The information provided, including pricing, is solely for informational purposes, and is subject to change without notice. Oral representations cannot be relied upon as correctly stating the representations of the developer. For correct representations, make reference to this brochure and to the documents required by section 718.503, Florida statutes, to be furnished by a developer to a buyer or lessee.



**ONE RIVER POINT**  
BY RAFAEL VIÑOLY

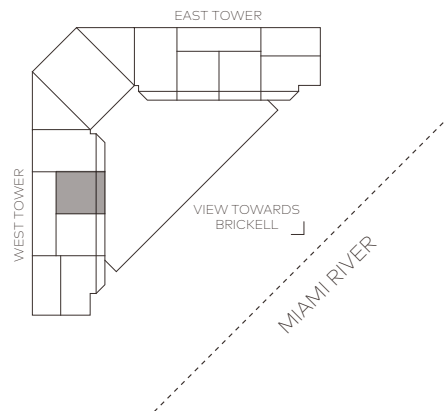


# RESIDENCE



## UNIT F4 1 bedroom 1.5 bathroom

Interior: 804ft<sup>2</sup> / 75m<sup>2</sup>  
Terrace: 320ft<sup>2</sup> / 30m<sup>2</sup>  
Total: 1,124ft<sup>2</sup> / 104m<sup>2</sup>



- Private elevator landings
- 10-to-12-foot-plus ceilings
- Expansive bay, river and city skyline views
- 12-foot deep glass enclosed outdoor living terraces
- Open layouts with floor-to-ceiling glass walls
- Honed stone flooring throughout
- Full slab stone finished Spa bathrooms with Dornbracht and TOTO fixtures
- Walk-in rain showers and free-floating bathtubs

- Dressing rooms with European finishes
- European kitchen cabinetry with stone countertops
- Top-of-the-line Miele and Gaggenau appliances
- Vertically vented exhausts
- Pre-wired for smart technology, designer illumination and A/V
- Custom heavy gauge doors and hardware
- Designated Art Wall with task lighting
- Multi-zone climate control integrated with smart-home technology

This is not intended to be an offer to sell, or solicitation to buy, condominium units to residents of any jurisdiction where such offer or solicitation cannot be made or are otherwise prohibited by law, and your eligibility for purchase will depend upon your state of residency. This offering is made only by the prospectus for the condominium and no statement should be relied upon if not made in the prospectus. The information provided, including pricing, is solely for informational purposes, and is subject to change without notice. Oral representations cannot be relied upon as correctly stating the representations of the developer. For correct representations, make reference to this brochure and to the documents required by section 718.503, Florida statutes, to be furnished by a developer to a buyer or lessee.



**ONE RIVER POINT**  
BY RAFAEL VIÑOLY

# SKY LOFT

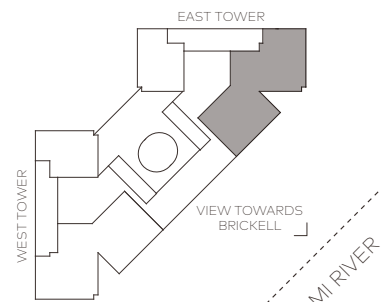


VIEW TOWARDS  
BRICKELL

VIEW TOWARDS  
BISCAYNE BAY

**UNIT A2**  
4 bedrooms  
5 bathrooms

Interior: 5,000ft<sup>2</sup> / 464m<sup>2</sup>  
Terrace: 435ft<sup>2</sup> / 40m<sup>2</sup>  
Total: 5,435ft<sup>2</sup> / 505m<sup>2</sup>



- Private elevator landings
- 10-to-12-foot-plus ceilings
- Expansive bay, river and city skyline views
- 12-foot deep glass enclosed outdoor living terraces
- Open layouts with floor-to-ceiling glass walls
- Honed stone flooring throughout
- Full slab stone finished Spa bathrooms with Dornbracht and TOTO fixtures
- Walk-in rain showers and free-floating bathtubs

- Dressing rooms with European finishes
- European kitchen cabinetry with stone countertops
- Top-of-the-line Miele and Gaggenau appliances
- Vertically vented exhausts
- Pre-wired for smart technology, designer illumination and A/V
- Custom heavy gauge doors and hardware
- Designated Art Wall with task lighting
- Multi-zone climate control integrated with smart-home technology

This is not intended to be an offer to sell, or solicitation to buy, condominium units to residents of any jurisdiction where such offer or solicitation cannot be made or are otherwise prohibited by law, and your eligibility for purchase will depend upon your state of residency. This offering is made only by the prospectus for the condominium and no statement should be relied upon if not made in the prospectus. The information provided, including pricing, is solely for informational purposes, and is subject to change without notice. Oral representations cannot be relied upon as correctly stating the representations of the developer. For correct representations, make reference to this brochure and to the documents required by section 718.503, Florida statutes, to be furnished by a developer to a buyer or lessee.

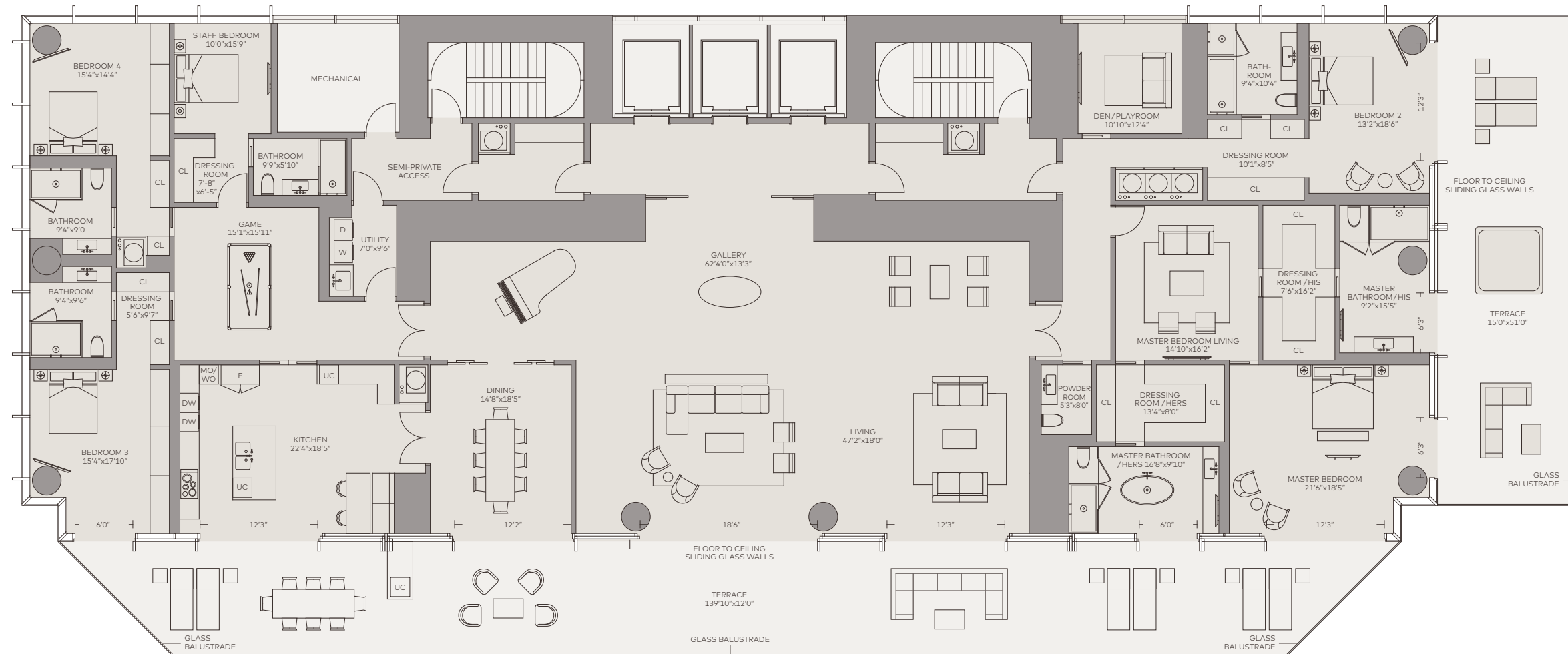


**ONE RIVER POINT**  
BY RAFAEL VIÑOLY





# PENTHOUSE

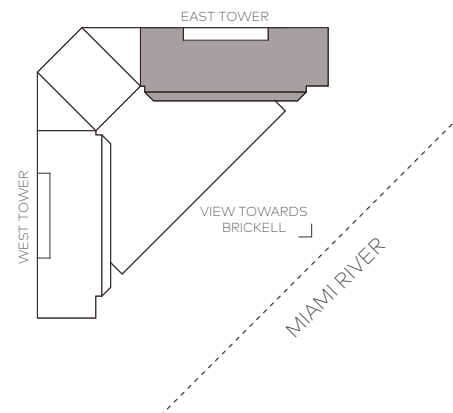


VIEW TOWARDS  
BISCAYNE BAY

VIEW TOWARDS  
BRICKELL

**UNIT A3**  
5 bedrooms  
6 bathrooms

Interior: 6,820ft<sup>2</sup> / 634m<sup>2</sup>  
Terrace: 2,299ft<sup>2</sup> / 214m<sup>2</sup>  
Total: 9,119ft<sup>2</sup> / 848m<sup>2</sup>



- Private elevator landings
- 10-to-12-foot-plus ceilings
- Expansive bay, river and city skyline views
- 12-foot deep glass enclosed outdoor living terraces
- Open layouts with floor-to-ceiling glass walls
- Honed stone flooring throughout
- Full slab stone finished Spa bathrooms with Dornbracht and TOTO fixtures
- Walk-in rain showers and free-floating bathtubs

- Dressing rooms with European finishes
- European kitchen cabinetry with stone countertops
- Top-of-the-line Miele and Gaggenau appliances
- Vertically vented exhausts
- Pre-wired for smart technology, designer illumination and A/V
- Custom heavy gauge doors and hardware
- Designated Art Wall with task lighting
- Multi-zone climate control integrated with smart-home technology

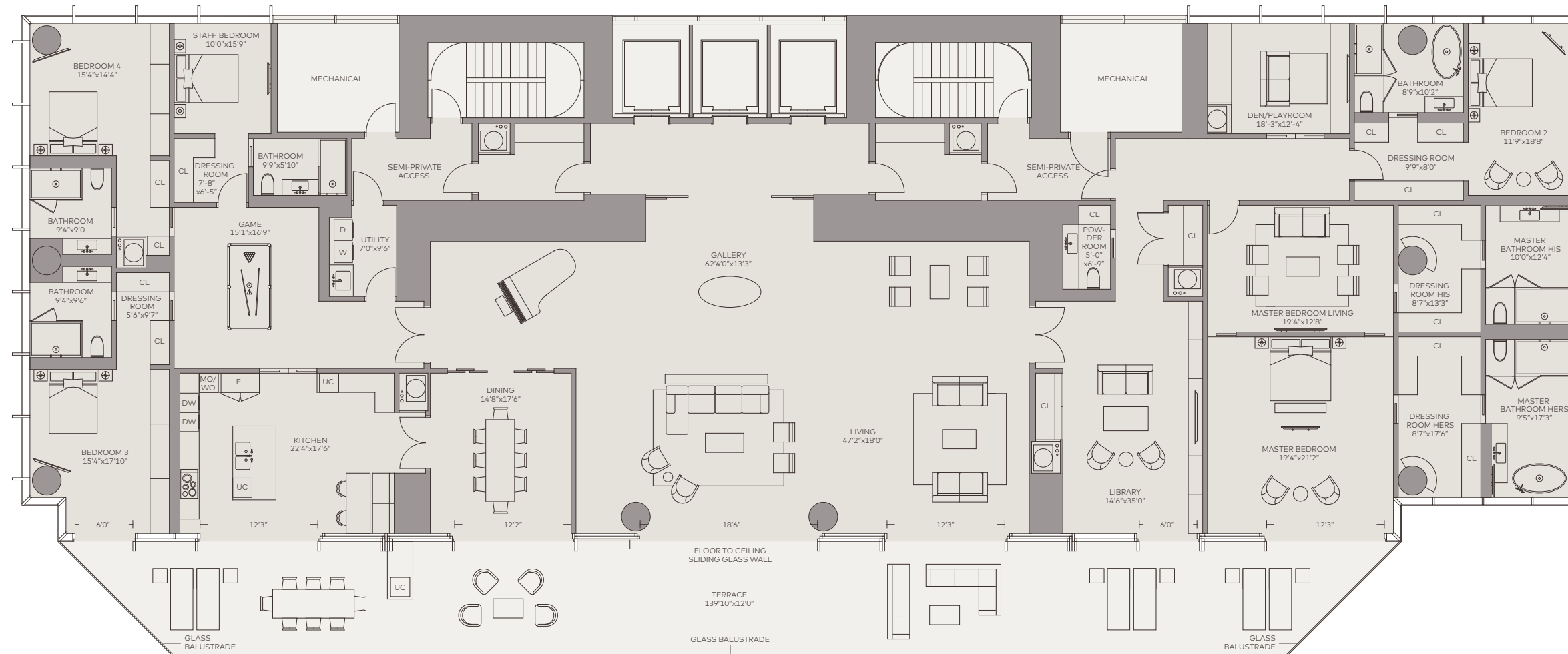
This is not intended to be an offer to sell, or solicitation to buy, condominium units to residents of any jurisdiction where such offer or solicitation cannot be made or are otherwise prohibited by law, and your eligibility for purchase will depend upon your state of residency. This offering is made only by the prospectus for the condominium and no statement should be relied upon if not made in the prospectus. The information provided, including pricing, is solely for informational purposes, and is subject to change without notice. Oral representations cannot be relied upon as correctly stating the representations of the developer. For correct representations, make reference to this brochure and to the documents required by section 718.503, Florida statutes, to be furnished by a developer to a buyer or lessee.



**ONE RIVER POINT**  
BY RAFAEL VIÑOLY

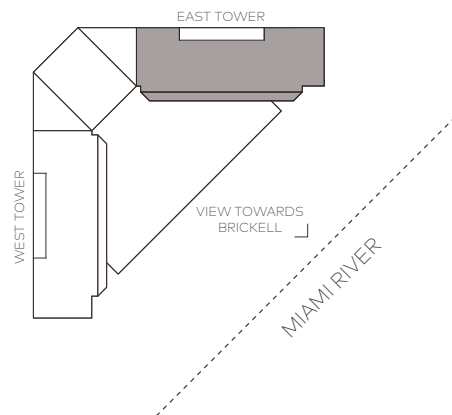


# PENTHOUSE



**UNIT A4**  
 5 bedrooms  
 6 bathrooms

Interior: 7,441ft<sup>2</sup> / 691m<sup>2</sup>  
 Terrace: 1,534ft<sup>2</sup> / 143m<sup>2</sup>  
 Total: 8,975ft<sup>2</sup> / 834m<sup>2</sup>



- Private elevator landings
- 10-to-12-foot-plus ceilings
- Expansive bay, river and city skyline views
- 12-foot deep glass enclosed outdoor living terraces
- Open layouts with floor-to-ceiling glass walls
- Honed stone flooring throughout
- Full slab stone finished Spa bathrooms with Dornbracht and TOTO fixtures
- Walk-in rain showers and free-floating bathtubs

- Dressing rooms with European finishes
- European kitchen cabinetry with stone countertops
- Top-of-the-line Miele and Gaggenau appliances
- Vertically vented exhausts
- Pre-wired for smart technology, designer illumination and A/V
- Custom heavy gauge doors and hardware
- Designated Art Wall with task lighting
- Multi-zone climate control integrated with smart-home technology

This is not intended to be an offer to sell, or solicitation to buy, condominium units to residents of any jurisdiction where such offer or solicitation cannot be made or are otherwise prohibited by law, and your eligibility for purchase will depend upon your state of residency. This offering is made only by the prospectus for the condominium and no statement should be relied upon if not made in the prospectus. The information provided, including pricing, is solely for informational purposes, and is subject to change without notice. Oral representations cannot be relied upon as correctly stating the representations of the developer. For correct representations, make reference to this brochure and to the documents required by section 718.503, Florida statutes, to be furnished by a developer to a buyer or lessee.

**ONE RIVER POINT**  
 BY RAFAEL VIÑOLY

